

Outside Diameter

Hygienic Tube

| | | | | | |
|----------|------------|------------|------------|------------|------------|
| OD ins | 1/2 | 3/4 | 1 | 1 1/2 | 2 |
| Wall | 16g/1.63mm | 16g/1.63mm | 16g/1.63mm | 16g/1.63mm | 16g/1.63mm |
| Weights* | 0.45 | 0.71 | 0.97 | 1.48 | 2.00 |

| | | | | | |
|----------|------------|------------|------------|------------|--|
| OD ins | 2 1/2 | 3 | 4 | 4 | |
| Wall | 16g/1.63mm | 16g/1.63mm | 16g/1.63mm | 14g/2.03mm | |
| Weights* | 2.51 | 3.03 | 4.07 | 4.58 | |

* Weights shown in kgs/mtr

When buying tube for hygienic applications, please note the following:

As per BS 4852 and ASTM 269/270 standards, this hygienic tube is fully annealed, with a recommended thickness of 1.63mm for OD of 1-3" and 2mm for 4" tube.

Although chemically identical to A269, tube of ASTM 270 standard is made to different tolerances of ovality and thickness. For use in processes with temperature and pressure changes, fully annealed tube is usually supplied with specifications for application. This tube is implicitly annealed, whereas un-annealed tube cannot be represented as A269 or A270.

The use of un-annealed tube may cause issues when:

- Welding thin wall tube to BS 4825 standard fittings
- Subjected to pressure and temperature changes
- There are high concentrations of chloride present
- Tubular components have differing levels of sulphur content
- Being formed, bent or otherwise manipulated.

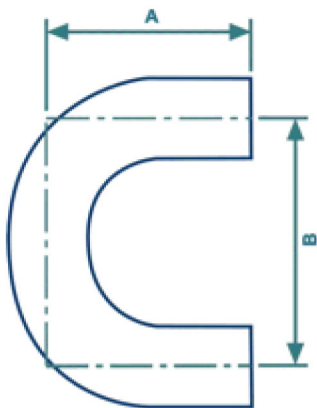
Plain End Fittings

Plain End Fittings are mostly supplied to BS 4825 part 2 and are available in descaled and polished finishes in 304 and 316 Grades. Ends can be fitted and any product can be made in accordance with customer specifications. DIN 11852 metric fittings are also available.

Outside Diameter

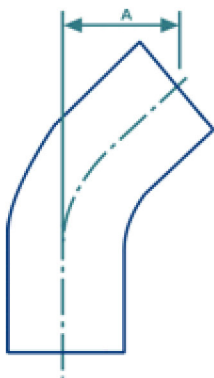
Hygienic Tube

180° Bend



| | | | | | | |
|----------|----|-------|-----|-------|-----|-----|
| Diam ins | 1 | 1 1/2 | 2 | 2 1/2 | 3 | 4 |
| Radius | 38 | 57 | 76 | 95 | 114 | 152 |
| A | 65 | 85 | 110 | 135 | 155 | 195 |
| B | 80 | 118 | 157 | 195 | 235 | 310 |

45° Bend

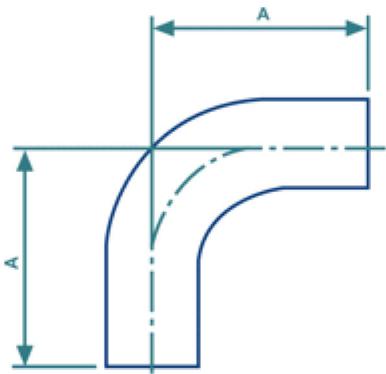


| | | | | | | |
|----------|----|-------|----|-------|-----|-----|
| Diam ins | 1 | 1 1/2 | 2 | 2 1/2 | 3 | 4 |
| Radius | 38 | 57 | 76 | 95 | 114 | 152 |
| A | 21 | 29 | 42 | 54 | 64 | 86 |

Outside Diameter

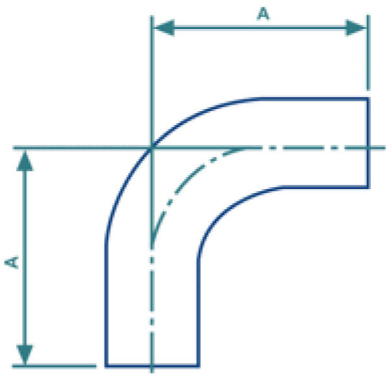
Hygienic Tube

90° Plain Bend: Long



| | | | | | | | | |
|----------|-----|-----|----|-------|-----|-------|-----|-----|
| Diam ins | 1/2 | 3/4 | 1 | 1 1/2 | 2 | 2 1/2 | 3 | 4 |
| Radius | 38 | 38 | 38 | 57 | 76 | 95 | 114 | 152 |
| A | 60 | 60 | 65 | 85 | 110 | 135 | 155 | 195 |

90° Plain Bend: Short

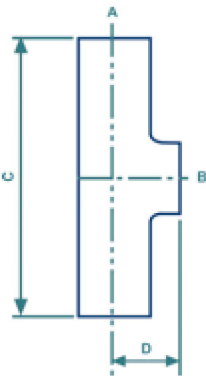


| | | | | | | |
|----------|----|-------|----|-------|-----|-----|
| Diam ins | 1 | 1 1/2 | 2 | 2 1/2 | 3 | 4 |
| Radius | 38 | 57 | 76 | 95 | 114 | 152 |
| A | 44 | 64 | 89 | 114 | 134 | 174 |

Outside Diameter

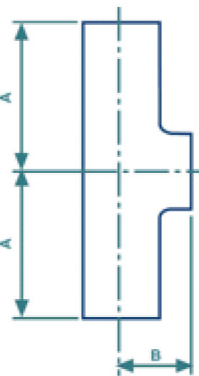
Hygienic Tube

AS Pulled Reducing Tee



| | | | | | | | | | |
|-----------|-------|-------|-----|-------|-------|-----|-----|-------|-----|
| Dia A ins | 1 1/2 | 2 | 2 | 2 1/2 | 3 | 3 | 4 | 4 | 4 |
| Dia B ins | 1 | 1 1/2 | 1 | 2 | 2 1/2 | 2 | 3 | 1 1/2 | 2 |
| C | 140 | 164 | 164 | 210 | 220 | 220 | 300 | 300 | 300 |
| D | 22 | 29 | 29 | 36 | 42 | 42 | 54 | 54 | 54 |

AS Pulled Tee

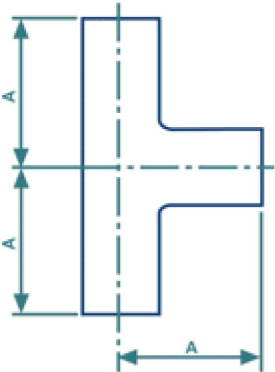


| | | | | | | |
|----------|----|-------|----|-------|-----|-----|
| Diam ins | 1 | 1 1/2 | 2 | 2 1/2 | 3 | 4 |
| A | 52 | 65 | 90 | 108 | 134 | 175 |
| B | 14 | 22 | 29 | 36 | 42 | 55 |

Outside Diameter

Hygienic Tube

Full Equal Tee



| | | | | | | | | |
|----------|-----|-----|----|-------|----|-------|-----|-----|
| Diam ins | 1/2 | 3/4 | 1 | 1 1/2 | 2 | 2 1/2 | 3 | 4 |
| A | 38 | 46 | 44 | 64 | 89 | 114 | 134 | 174 |